

Wollaton East & Lenton Abbey Area Committee Ward Performance Report January to March 2014



Neighbourhood Development
Officer Pauline Dorey
December 2013 Data

Introduction

- The WELA ward has a growing diverse community in Lenton Abbey with 74% white British and 6% other white some of whom have English as another language and others of mixed heritage, Black British and Caribbean and Asian origin. The 2012 Insight and 2010 ONS statistics are slightly skewed by the transient student population mainly studying at University of Nottingham.
- Wollaton Park estate has a hidden community of disabled children, young people and older adults and due to caring responsibilities have pockets of fuel poverty.
- In the top 10% nationally of SOA's for Crime and Disorder and Income Deprivation affecting children. However reported crime figures have generally fallen across the ward compared to the previous year.
- Wollaton Park estate have seen a growing number of HMO's and are experiencing increasing problems with their landlords.
- Ongoing car parking and traffic issues across the Ward

Wollaton East and Lenton Abbey

- Ward Priorities

Theme	Priorities	Key Actions	Outcome	Lead
SAFER	To reduce antisocial behaviour To improve awareness of Domestic Violence issues amongst partners Violence Dwelling Burglary Shop Theft	Co-ordinate work of Neighbourhood Services, Community Protection, Police & NCH. NCH Environmentals Promote use of WELA DV & other support services Info packs to partners. Focus on DV support by ward faith orgs Burglaries- increased patrols in LA. Up-graduate operation Action Planning at NAT meetings.	NAT Problem Solving meetings resolving actions and identifying hotspots Fencing - community evaluation completed DV packs distributed to partner organisations in WELA ward . Crimes still increasing	Locality Management NCH All partners Locality Management, Locality Management Locality Management, Community Protection
	To reduce violent dog attacks in Lenton Abbey	Dog Control Order started October 2012. Continued Awareness and Enforcement Campaign Community Engagement Activities	Improve reporting by residents. Feeding intelligence from residents to CPO's re aggressive dogs, continue operations. Promote LAG's	Police NPBT
	Increase visibility of the Police	Education/ raising awareness of fire safety in the Home and deliberate fire setting		
	Reduce the number of Accidental Dwelling Fires, Deliberate Secondary fires and Deliberate Primary Fires	Identify those in community vulnerable from fire & deliver appropriate interventions Work closely with Youth team, Police, partners in area to target deliberate Fire Setting	Primary and secondary fires are lowest in Nottingham	Notts Fire and Rescue Service Police Family and Community Teams -Youth

Wollaton East and Lenton Abbey

- Ward Priorities

Theme	Priority	Key Actions	Outcome	Lead
NEIGHBOURHOODS	To reduce parking problems in the ward	Experimental TRO (Lenton Abbey) phase 1 monitored & reviewed for future planning Mtg with Traffic Manag in Jan review survey results/ scoped Residents Parking Scheme wp	Verge parking prevented Monitoring effectiveness & review ongoing for 18 mths Developing Plans for Resident Parking Scheme and consultation	Locality Management Traffic Management
	To tackle levels of fly tipping and untidy gardens, alleyways by landlords of HMO's and in general Reduction of dog fouling	Task and Finish partners meetings. Review of all LA alleyways. Monitor progress at monthly NAT meetings.. Implementation of Dog Order. Review at NAT, Approach external partners re funding additional bins in key sites Ongoing community and partner consultation on Ward Plan and Wensor Ave	Planning Days of Action in LA . Improved partnership working Improved enforcement and cleanliness Additional funds for revenue costs secured and bin installed on Sutton Passeys Cresc Hawton Spinney Management and Development Plan agreed and now in place. Quotes being sought	Locality Management NCH CP Locality Management Locality Management
	Ensure the views of local people assist in setting priorities	Allotment project. 20mph, Ring Road Improvements, LA Experimental TRO (shops), Sutton Passeys Crescent play area, LA Park (events planned). Ongoing consultation with citizens, TRA &VCS organisations/grps	Community and partner consultation on: Ward Plan, Wensor Ave Allotment site project, Sutton Passeys Cresc play area and Lenton Abbey park (ongoing). WP est Resident Parking Scheme, WP est 20mph	Traffic Management & Highways Parks and Open Spaces
	Neighbourhood Transformation Plan	Partners met Jan to develop Alleyway/Allotment Action Pln	Alleyway Days of Actions, Old Allotment Site Plans being Dev	

Wollaton East and Lenton Abbey

- Ward Priorities

Theme	Priority	Key Actions	Outcome	Lead
FAMILIES	<p>Support work of Community Associations and community groups</p> <p>Help support groups/ communityorganisations develop new activities in the ward</p> <p>Support develop of new activities for children/young people</p>	<p>New After School Club half term playscheme in L Abbey. Painting community centre internally</p> <p>Supporting local VCS develop new activities for LA residents</p> <p>Support Hope Nottingham re policies/practices</p> <p>Research youth needs and review ward youth provision</p>	<p>After School Club at Sheila Roper Community Centre progressing well in term time & activities in Feb ½ term.</p> <p>New kitchen at Sheila Roper CC</p> <p>Support Hope Nottingham with partnership building for local projects and improved Safeguarding practices and training</p> <p>Review ward youth provision</p>	<p>Locality Management, Family & Community Team</p> <p>Locality Management, FCT, VCS</p>
HEALTH	<p>Promote healthier lifestyles and improve awareness of health issues.</p> <p>Promote opportunities for tackling fuel poverty.</p>	<p>New publicity and advertising existing activities which promote wellbeing and reduce social isolation.</p> <p>Developing new partnerships with Sustrans and Health Visitors.</p> <p>Energy Switch and Save Advice Sessions</p>	<p>Ongoing distribution of activities/ health information.</p> <p>New partnership working and improved local take up of services and local groups. Improved health outcomes.</p> <p>Delivered at WPRA Open meeting, LARA AGM, Spring events Ongoing at all community meetings</p>	<p>Locality Management, Health Promotion, VCS partners</p> <p>Locality Management Energy T</p>
WORKING	<p>Increase awareness of training and employment opportunities & advice.</p>	<p>Training/ employment opportunities -to all partners.</p> <p>Hope Nottingham developing Employment Pathway Partnerships - Princes Trust,</p>	<p>Regular bulletins sent.</p> <p>Information on Apprenticeship and Nottingham Jobs Fund distributed</p> <p>Local projects submitted</p>	<p>Locality Management</p> <p>Hope Nottingham</p>

Community Engagement

Events Delivered

Event	Lead Partners	Date/Time	Venue
Hillside Local Issues Group LAG	Neighbourhood Policing	Wed 4 th December, 5pm	St Mary's Church, Wollaton Hall Drive, off Derby Road
Wollaton Park Residents Assoc	Wollaton Park Residents Assoc	16th October , 7.30pm	Wollaton Park Community Centre,
Wollaton Park Residents Assoc	Wollaton Park Residents Assoc	20 th November, 7.30pm	Wollaton Park Community Centre,
Lenton Abbey Residents Assoc LAG	Lenton Abbey Residents Assoc Neighbourhood Policing	16th October, 7pm	Sheila Roper Community Centre
Lenton Abbey Residents Assoc LAG	Lenton Abbey Residents Assoc Neighbourhood Policing	11th December, 7pm	Sheila Roper Community Centre
NCH Environmentals Resident Consultation	NCH, Locality Management, Councillors	Dec 2013	Individual properties in Lenton Abbey

Community Engagement

Events Delivered

Event	Lead Partners	Date/Time	Venue
WELA NAT	Locality Management	9 th October, 12.30-2.30pm	Sheila Roper Community Centre
WELA NAT	Locality Management	7 th November, 10-12	Sheila Roper Community Centre
WELA NAT	Locality Management	12 th December, 10-12	Sheila Roper Community Centre
NCH Area 7 Panel	NCH	13 th November, 12-2pm	Wollaton Park Community Centre
Xmas Lights Switch On	Locality Management, supported by residents/ citizens , VCS partners	5 th December, 5-6.30pm	The Blossoms, Woodside Road Shops
Xmas Lights Switch On and Carol Concert	WPRA, St Mary's Church supported by residents/ citizens,	8 th December, 4pm	Farndon Green
Christmas Collections for local charities	Locality Management, supported by residents/ citizens, WPCC	Throughout Dec	Various in LA and WP estate

Community Engagement

Events Delivered

Event	Lead Partners	Date/Time	Venue
Energy Switch Advice sessions and stalls	Locality Management, NCC Energy Advisor	Various	Various in WELA ward
Site clearance	Community Payback, City Services	Jan 2014	Brook Road Allotment Site, LA
Lenton Abbey Afterschool Club 5-11yrs	Sheila Roper Playscheme and Afterschool Club Grp, Locality Management, Family and Community Team	Every Tuesday 4-5.30pm in school term time	Sheila Roper Community Centre and/ or Lenton Abbey park
Lenton Abbey Playscheme 5-11yrs	Sheila Roper Playscheme and Afterschool Club Grp, Locality Management, Family and Community Team	Weds 2-4pm in Oct school holidays	Sheila Roper Community Centre and/ or Lenton Abbey park
Review of Youth Provision	Sheila Roper Playscheme and Afterschool Club Grp, Locality Management, Family and Community Team	18 th October, 10.30am	Sheila Roper Community Centre

Community Engagement

Events Delivered

Event	Lead Partners	Date/Time	Venue
Planning Lenton Abbey Friends and Fun Day Association (LAFFDA)	Lenton Abbey Friends and Fun Day Association (LAFFDA)	19 th November, 6.30pm	Sheila Roper Community Centre
Sheila Roper Community Assoc Management Committee meeting	Sheila Roper Community Assoc	7 th October , 11am	Sheila Roper Community Centre
Sheila Roper Community Assoc Management Committee meeting	Sheila Roper Community Assoc	21 st October , 11am	Sheila Roper Community Centre
Sheila Roper Community Assoc Management Committee meeting	Sheila Roper Community Assoc	2 nd December, 11am	Sheila Roper Community Centre

Community Engagement

Events Delivered

Event	Lead Partners	Date/Time	Venue
Promotion of Employment Initiatives To Businesses in Dunkirk	Economic Development, Locality Management	31 st October , 12.45 - 3pm	Dunkirk Industrial Estate
Tree Planting with local residents/citizens	Locality Management, Ward Councillors, Tree Services, Neighbourhood Watch, TRA's	11 th November, 3pm onwards	4 locations in WELA ward
Community Bulb Planting	Locality Management, Lenton Abbey Afterschool Club, Scouts	19 th November, 3.30pm	The Blossoms, Woodside Road
Community Bulb Planting	Locality Management, Wollaton Park Residents Assoc, Bluecoat Academy, WP estate citizens	21 st November, 10.30am and 1pm	Farndon Green, Orston Green
Local Travel Consultation Children/ Young People event	Locality Management, Lenton Abbey Afterschool Club, Sustrans	3 rd December, 4-5.30pm	Sheila Roper Community Centre

Community Engagement

Future Events and Activities Planned

Event	Lead Partners	Date/Time	Venue
Neighbourhood Transformation meeting sub group meetings	Locality Management, Police, Allotments, Community Protection partners, NCH,	Various throughout Jan, Feb, March	Various including Sheila Roper Community Centre
WELA NAT	Locality Management	15 th January, 1-2pm	Sheila Roper Community Centre
WELA NAT	Locality Management	13 th February, 10-12	Sheila Roper Community Centre
WELA NAT	Locality Management	19 th March, 1-2pm	Sheila Roper Community Centre
Budget Consultation Surveys	Locality Management	January / February	Various throughout WELA ward
Budget Consultation	Locality Management Nottingham Action group	29 th January, 6.30pm	Function Room, Rose and Crown, Derby Road

Community Engagement

Future Events and Activities Planned

Event	Lead Partners	Date/Time	Venue
Ring Road Information Event	Locality Management, Wollaton Park Residents Association , Ring Road Improvements Team	15 th January, 7.30pm	Wollaton Park Community Centre
Lenton Abbey Afterschool Club 5-11yrs	Sheila Roper Playscheme and Afterschool Club Grp, Locality Management, Family and Community Team	Every Tuesday 4-5.30pm in school term time	Sheila Roper Community Centre and/ or Lenton Abbey park
Lenton Abbey Playscheme 5-11yrs	Sheila Roper Playscheme and Afterschool Club Grp, Locality Management, Family and Community Team	Wednesday 2-4pm in Feb school holidays	Sheila Roper Community Centre and/ or Lenton Abbey park
Graffiti art workshop 10-19yrs	VCS provider	February	Sheila Roper Community Centre
Meet your PCSO	Neighbourhood Police Beat Team	25 th January, 6-6.30pm	Woodside Road Shops

Community Engagement

Future Events And Activities Planned

Event	Lead Partners	Date/Time	Venue
Lenton Abbey Park Consultation	Parks and Open Spaces, Locality Management,	February/ March	Sheila Roper Community Centre
Lenton Abbey Park Consultation	Parks and Open Spaces, Locality Management,	Various February/ March	Various in Lenton Abbey
Lenton Abbey Park Consultation at LARA AGM	Parks and Open Spaces, Locality Management, Lenton Abbey Residents Association (LARA)	March TBC, 7pm	Sheila Roper Community Centre
Alleyway Days Of Actions and Tenant Participation	Locality Management, NCH, City Services, Community Protection	Various in Feb and March 2014	Various alleyways in Lenton Abbey
Spring Event	Sheila Roper Community Association , Locality Management	April 2014	Sheila Roper Community Centre

Community Engagement

Ward Walks

Area/Estate	Date/Time	Meeting Point
QMC underpass, Derby Road, Gatehouse, Triumph Rd	Thursday 30 th January 10.45am - 11.45am	Opposite QMC, Derby Road
Lenton Abbey Park, north end of Woodside Road, Lenton Abbey	Thursday 27 th February, 10.45am - 11.45am	Lenton Abbey Park, Woodside Road, Lenton Abbey
North half of Middleton Boulevard and West part of Orston Drive	Thursday 20 th March, 10.45am - 11.45am	Corner of Middleton Boulevard/ Crown Island, Wollaton Park estate

Community Meetings

Group	Date	Venue
Nottingham Action Group	29 th January, 6.30pm	Rose and Crown Function Room, Derby Road
Nottingham Action Group	TBC, 6.30pm	Rose and Crown Function Room, Derby Road

Community Engagement

Community Meetings

Group	Date	Venue
Sheila Roper Community Assoc MC	20 th January, 10am	Sheila Roper Community Centre
Sheila Roper Community Assoc MC	TBC March	Sheila Roper Community Centre
Wollaton Park Residents Assoc	15 th January, 7.30pm	Wollaton Park Community Centre
Wollaton Park Residents Assoc	19 th February, 7.30pm	Wollaton Park Community Centre
Wollaton Park Residents Assoc	19 th March, 7.30pm	Wollaton Park Community Centre
Hillside Local Issues Group LAG	Monday 17 th February, 2pm	Wollaton Park Community Centre
LARA & Local Issues Group LAG	22 nd January, 7pm	Sheila Roper Community Centre
LARA AGM & Local Issues Group LAG	March TBC, 7pm	Sheila Roper Community Centre
Lenton Abbey Friends and Fun Day Association (LAFFDA)	7 th January, 6.30pm	Sheila Roper Community Centre
Lenton Abbey Friends and Fun Day Association (LAFFDA)	4 th February, 6.30pm	Sheila Roper Community Centre

Finance

- **Ward Councillor Budgets**

Total amount allocated from 1st April 2013 £ 5,900

Applications pending

Budget remaining unallocated £ 21,400 (includes underspend from 12/13)

Community Safety and Wellbeing Fund unallocated £14,749

- **Area Capital Fund**

Total amount allocated from 1st April 2013 to date £ 3,359

Awaiting quotes for works and schemes. Scheme decisions pending.

2013-2015 LTP Budget remaining unallocated as of 10th January 2014
£83,029 (inc. of 2012-2013 underspend)

2013-2014 Public Realm element £ 19,800

- **NCH Environmentals**

Total amount allocated from 1st April 2013 to date £ 5, 372.72

Awaiting quotes for works

Budget remaining unallocated £16,749.28
(inc. of £ 3,846 2012-2013 underspend)

Ward Summary

Crime data is shown below for both the current month compared to last year and the year to date.

Ward	Type	Dec-12	Dec-13	Volume +/-	% Change	YTD 12-13	YTD 13-14	Volume +/-	% Change
WOLLATON EAST & LENTON ABBEY	Autocrime	2	2	0	0%	20	31	11	55%
	Burglary	4	5	1	25%	35	57	22	63%
	Burglary Other	2		-2	-100%	19	17	-2	-11%
	Damage		4	4		27	35	8	30%
	Drugs			0		14	11	-3	-21%
	Fraud		2	2		5	7	2	40%
	Other			0		9	7	-2	-22%
	Personal Robbery		1	1		3	3	0	0%
	Robbery Business			0				0	
	Sexual	1		-1	-100%	8	4	-4	-50%
	Theft	16	12	-4	-25%	140	134	-6	-4%
	Threats	2		-2	-100%	6	12	6	100%
	Violence	10	2	-8	-80%	44	36	-8	-18%
WOLLATON EAST & LENTON ABBEY Total		37	28	-9	-24%	330	354	24	7%
ASB		8	8	0	0%	110	117	7	6%

The summary below shows only year to date figures, and in the case of public realm and fire data, will generally be a month in arrears.

Type	YTD 12-13	YTD 13-14	Volume +/-	% Change
Domestic Violence Crime	20	24	4	20%
Night Time Economy Violence	1	1	0	0%
Hate Crime	6	4	-2	-33%
Deliberate Fires	6	6	0	0%
Cleanliness (Average Score)	86	91	5	6%
Graffiti	70	42	-28	-40%
Fly-Tipping	42	50	8	19%

Priorities & Targets

The Central Locality has targets to reduce Dwelling Burglary, Shop Theft and Violence. The Locality's performance against Targets is set out below. This shows that the target is being met for Dwelling Burglary, but not for Shop Theft or Violent Crime.

Locality Target Summary																
Locality	Crime Type	Apr-13	May-13	Jun-13	Jul-13	Aug-13	Sep-13	Oct-13	Nov-13	Dec-13	Jan-14	Feb-14	Mar-14	YTD	Proposed year end Position	+/- Target Position
Central	Dwelling Burglary	96	77	71	65	56	59	55	79	69	75	75	75	627	890	-38
	Shop Theft	88	71	96	55	54	27	54	52	57	40	40	40	554	644	30
	Violence	96	114	115	130	130	110	145	109	113	84	84	84	1062	1173	141

Ward Performance

The table below shows how Wollaton East & Lenton Abbey is performing year to date for All Crime and ASB in comparison to the other wards on the Division. High Impact wards are highlighted in blue.

Wollaton East & Lenton Abbey is seeing a slight increase in All Crime and ASB.

Dec 2013		All Crime				ASB			
Locality	Ward	YTD 12/13	YTD 13/14	Change	% Change	YTD 12/13	YTD13/14	Change	% Change
Central	ARBORETUM	968	1109	141	14.6%	712	757	45	6.3%
	BERRIDGE	1149	1171	22	1.9%	821	737	-84	-10.2%
	DUNKIRK & LENTON	807	744	-63	-7.8%	348	273	-75	-21.6%
	RADFORD & PARK	1119	1150	31	2.8%	605	682	77	12.7%
	SHERWOOD	780	985	205	26.3%	351	388	37	10.5%
	WOLLATON EAST & LENTON ABBEY	330	354	24	7.3%	110	117	7	6.4%
	WOLLATON WEST	377	430	53	14.1%	140	138	-2	-1.4%
Central Total		5530	5943	413	7.5%	3087	3092	5	0.2%
City	CITY CENTRE	6138	5638	-500	-8.1%	2160	1872	-288	-13.3%
North	ASPLEY	1326	1194	-132	-10.0%	755	704	-51	-6.8%
	BASFORD	903	940	37	4.1%	542	511	-31	-5.7%
	BESTWOOD	734	808	74	10.1%	491	643	152	31.0%
	BILBOROUGH	968	956	-12	-1.2%	615	611	-4	-0.7%
	BULWELL	1438	1428	-10	-0.7%	919	822	-97	-10.6%
	BULWELL FOREST	689	735	46	6.7%	345	403	58	16.8%
	LEEN VALLEY	547	583	36	6.6%	304	309	5	1.6%
North Total		6605	6644	39	0.6%	3971	4003	32	0.8%
South	BRIDGE	763	648	-115	-15.1%	441	414	-27	-6.1%
	CLIFTON NORTH	527	545	18	3.4%	296	313	17	5.7%
	CLIFTON SOUTH	747	578	-169	-22.6%	458	454	-4	-0.9%
	DALES	790	877	87	11.0%	529	613	84	15.9%
	MAPPERLEY	837	901	64	7.6%	467	448	-19	-4.1%
	ST ANNS	847	941	94	11.1%	822	801	-21	-2.6%
South Total		4511	4490	-21	-0.5%	3013	3043	30	1.0%
Division		22784	22715	-69	-0.3%	12231	12010	-221	-1.8%
Previous Month's Performance					1.0%				-2.8%

Exception Reporting

Dwelling Burglary

Dwelling Burglary is showing an increase in December compared to last year but relates to only 1 offence. For the year to date there has been an increase of 22%.

Theft

Theft is the main volume crime category on this ward, but there has been a reduction for both the month and the year to date. The table below shows the individual categories within the group. December had low levels of theft, where the majority of offences were Theft of Cycle. 6 of the 8 Cycle Theft relate to various locations at the University. Also shown on the table is the percentage of theft offences where mobile phones were targeted.

Offence	Apr	May	Jun	Jul	Aug	Sep	Oct	Nov	Dec	Total
THEFT OTHER	11	5	10	4	6	7	5	12	1	61
THEFT OR UNAUTHORISED TAKING OF PEDAL CYCLE	4	4	9	3	7	2	6	13	8	56
THEFT FROM PERSON				3		2			1	6
THEFT IN DWELLING OTHER THAN AUTO MACHINE OR METER	1	1			1				2	5
THEFT FROM SHOP	1		1				1			3
ABSTRACTING ELECTRICITY		1				1				2
THEFT FROM AUTO MACHINE OR METER			1							1
Total	17	11	21	10	14	12	12	25	12	134
% of Mobile Phone theft	12%	0%	10%	10%	7%	33%	25%	24%	8%	15%

Exception Reporting (continued)

Violence

There were only 2 offences of violence on the Ward for December and the ward is one of the few seeing a reduction in Violence for the year to date.

Criminal Damage

Criminal Damage offences saw an increase in December. Although only suffering 4 for the month, there were none for the same month last year. There has also been an increase in criminal damage for the year to date. The table below gives a breakdown of the individual categories within the group. Damage to dwelling has the most offences for the year to date.

Offence	Apr	May	Jun	Jul	Aug	Sep	Oct	Nov	Dec	Total
CRIMINAL DAMAGE TO A DWELLING	2		2			3	2	2	2	13
CRIMINAL DAMAGE TO A VEHICLE	3		1	1	1	2		2		10
CRIMINAL DAMAGE OTHER	3	1		1		1			1	7
ARSON	1			1			1			3
CRIMINAL DAMAGE TO A BUILDING OTHER THAN DWELLING	1								1	2
Total	10	1	3	3	1	6	3	4	4	35

All Crime

The ward has a lower than average crime rate compared to the rest of the Division, with the exception of dwelling burglary where the crime rate is slightly about the average. The ward also has a lower than average rate for ASB.

Crime Figures

Crime Types by Rate (per 1000 of population) of the 20 Wards – Figures are Year to Date 2013/14

WARD	ALL CRIME	AUTOCRIME	BURGLARY	DAMAGE	PERSONAL ROBBERY	THEFT	VIOLENCE
ARBORETUM	99.06	5.74	9.60	12.56	5.47	15.52	24.85
ASPLEY	67.76	5.96	5.45	11.80	0.91	10.55	17.25
BASFORD	57.44	7.10	5.43	9.87	1.23	10.43	13.39
BERRIDGE	62.46	7.24	5.84	9.17	1.07	14.21	12.49
BESTWOOD	48.23	3.46	5.19	9.91	1.07	6.21	11.58
BILBOROUGH	56.87	6.73	5.36	10.24	0.95	8.99	12.68
BRIDGE	64.90	3.59	1.64	8.31	1.23	26.04	11.69
BULWELL	88.38	5.69	5.08	18.51	1.92	21.97	17.21
BULWELL FOREST	53.84	3.53	4.04	10.06	1.47	14.25	10.65
CLIFTON NORTH	41.43	3.03	4.11	8.69	1.16	5.66	8.46
CLIFTON SOUTH	41.44	2.51	5.31	7.10	0.86	7.31	10.76
DALES	53.28	4.56	2.73	10.08	0.49	11.36	11.54
DUNKIRK AND LENTON	67.95	10.26	6.68	6.41	0.73	21.43	9.43
LEEN VALLEY	54.48	4.58	5.61	8.78	1.68	11.12	10.00
MAPPERLEY	56.42	7.64	4.48	7.83	0.57	10.73	10.67
RADFORD AND PARK	58.59	8.17	6.43	5.41	1.89	16.69	8.93
SHERWOOD	62.09	5.64	5.97	6.49	1.82	21.41	11.16
ST ANNS	66.80	4.65	3.79	12.10	3.79	7.30	18.61
WOLLATON EAST AND LENTON ABBEY	35.57	3.11	5.73	3.62	0.30	12.86	3.52
WOLLATON WEST	29.03	4.75	4.14	3.39	0.27	7.67	2.85
WARD AVERAGE	58.30	5.40	5.13	9.02	1.44	13.09	11.89

All ASB Figures

All ASB by Rate (per 1000 of population) of the 20 Wards)

WARD	RATE (PER 1000 OF POP.) Dec 2013
ARBORETUM	6.82
ASPLEY	3.40
BASFORD	3.64
BERRIDGE	2.36
BESTWOOD	3.64
BILBOROUGH	3.22
BRIDGE	3.08
BULWELL	3.65
BULWELL FOREST	2.79
CLIFTON NORTH	2.25
CLIFTON SOUTH	2.01
DALES	3.95
DUNKIRK & LENTON	1.47
LEEN VALLEY	3.92
MAPPERLEY	2.02
RADFORD & PARK	2.14
SHERWOOD	1.62
ST ANNS	5.23
WOLLATON EAST & LENTON ABBEY	0.80
WOLLATON WEST	0.47
WARD AVERAGE	2.92

Fire

Table: Volume of Deliberate Primary and Secondary Fires by Ward

Fire Data									
Locality	Ward	Nov-12	Nov-13	Volume +/-	% Change	Ytd 12-13	Ytd 13-14	Volume +/-	% Change
Central	Arboretum	2	0	-2	-100%	13	18	5	38%
	Berridge	7	3	-4	-57%	35	29	-6	-17%
	Dunkirk and Lenton	1	2	1	100%	5	7	2	40%
	Radford and Park	1	1	0	0%	24	14	-10	-42%
	Sherwood	0	3	3	29900%	9	15	6	67%
	Wollaton East and Lenton Abbey	0	0	0	-100%	6	6	0	0%
	Wollaton West	0	0	0	-100%	2	3	1	50%
Central Locality		11	9	-2	-18%	94	92	-2	-2%
North	Aspley	1	0	-1	-100%	45	34	-11	-24%
	Basford	4	2	-2	-50%	40	26	-14	-35%
	Bestwood	5	0	-5	-100%	31	37	6	19%
	Bilborough	3	2	-1	-33%	34	19	-15	-44%
	Bulwell	6	7	1	17%	60	56	-4	-7%
	Bulwell Forest	0	1	1	9900%	28	12	-16	-57%
	Leen Valley	3	2	-1	-33%	20	20	0	0%
North Locality		22	14	-8	-36%	258	204	-54	-21%
South	Bridge	0	2	2	19900%	10	14	4	40%
	Clifton North	1	2	1	100%	10	9	-1	-10%
	Clifton South	2	1	-1	-50%	17	25	8	47%
	Dales	1	1	0	0%	6	13	7	117%
	Mapperley	2	0	-2	-100%	14	10	-4	-29%
	St. Anns	2	1	-1	-50%	22	23	1	5%
South Locality		8	7	-1	-13%	79	94	15	19%
Division		41	30	-11	-27%	431	390	-41	-10%

Note: Where ward boundaries overlap with the City Centre fires that occurred in the City Centre have been **included** in the ward figures.

Community Protection

Data has been received from Community Protection and where postcodes have been listed these have been geo-coded and mapped to determine the Ward. All addresses relate to the address of the Perpetrator.

FPNs are not currently available at ward level.

In December 2013 the following orders were issued:

- **2 Statutory Notices for the Environment**
- **1 Works in Default for the Environment**
- **1 Injunction for Drugs**

For enquiries regarding Community Protection court outcomes please contact the Operational Manager for the locality.

Cleanliness Index

Cleanliness Index
Score

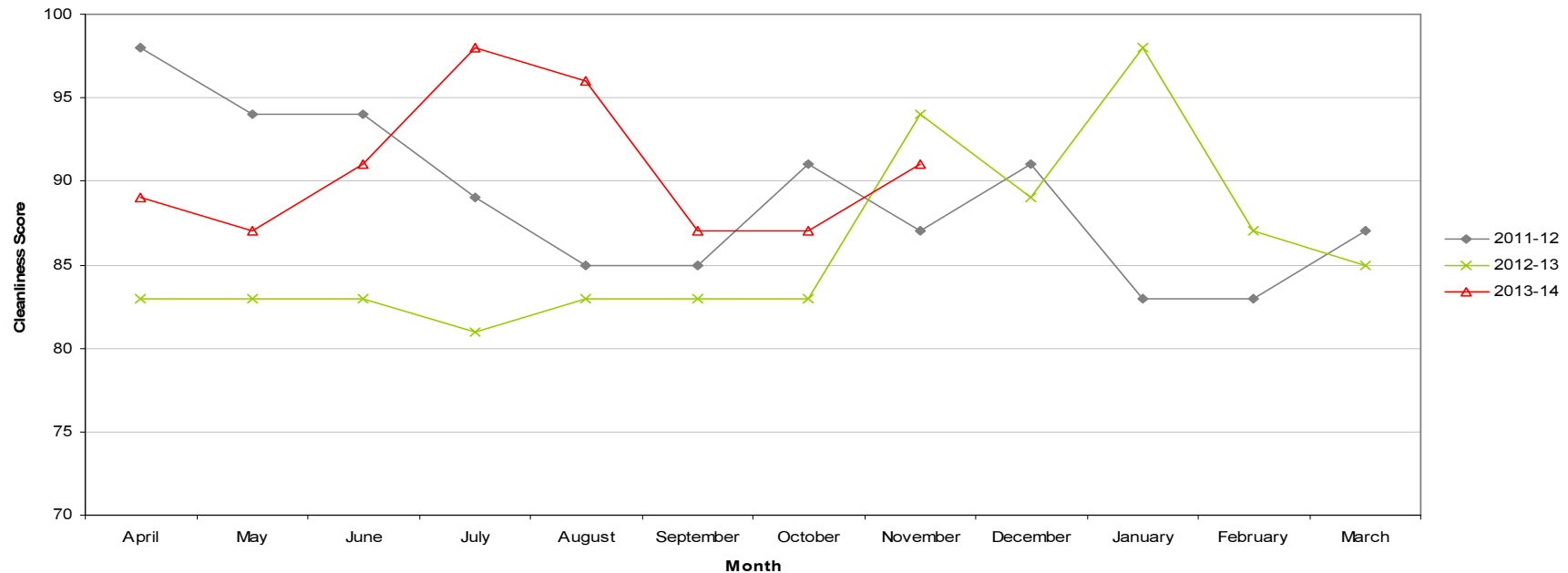
91

Performance compared to
previous year

Performance compared to
neighbourhoods target
of 86

- All data refers to a comparison with the previous year's month
- It is proposed that performance over time graphs be used for each indicator
- Historic data for comparison is not available for dog fouling

Cleanliness Index - Wollaton East & Lenton Abbey

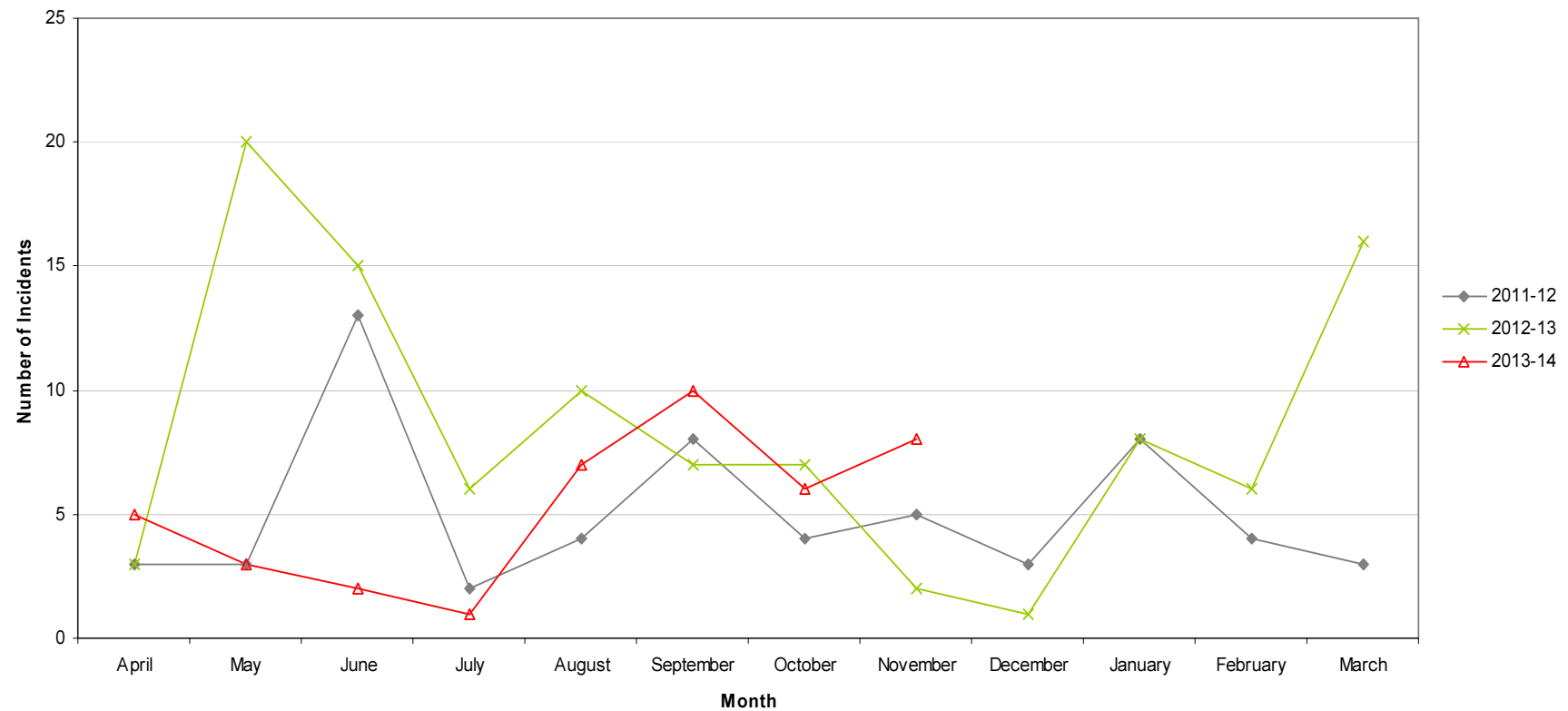


Graffiti Reports

RED	8 incidents	Increase of 6
AMBER		
GREEN		

- All data refers to a comparison with the previous year's month
- It is proposed that performance over time graphs be used for each indicator
- Historic data for comparison is not available for dog fouling

Incidents of Graffiti - Wollaton East & Lenton Abbey

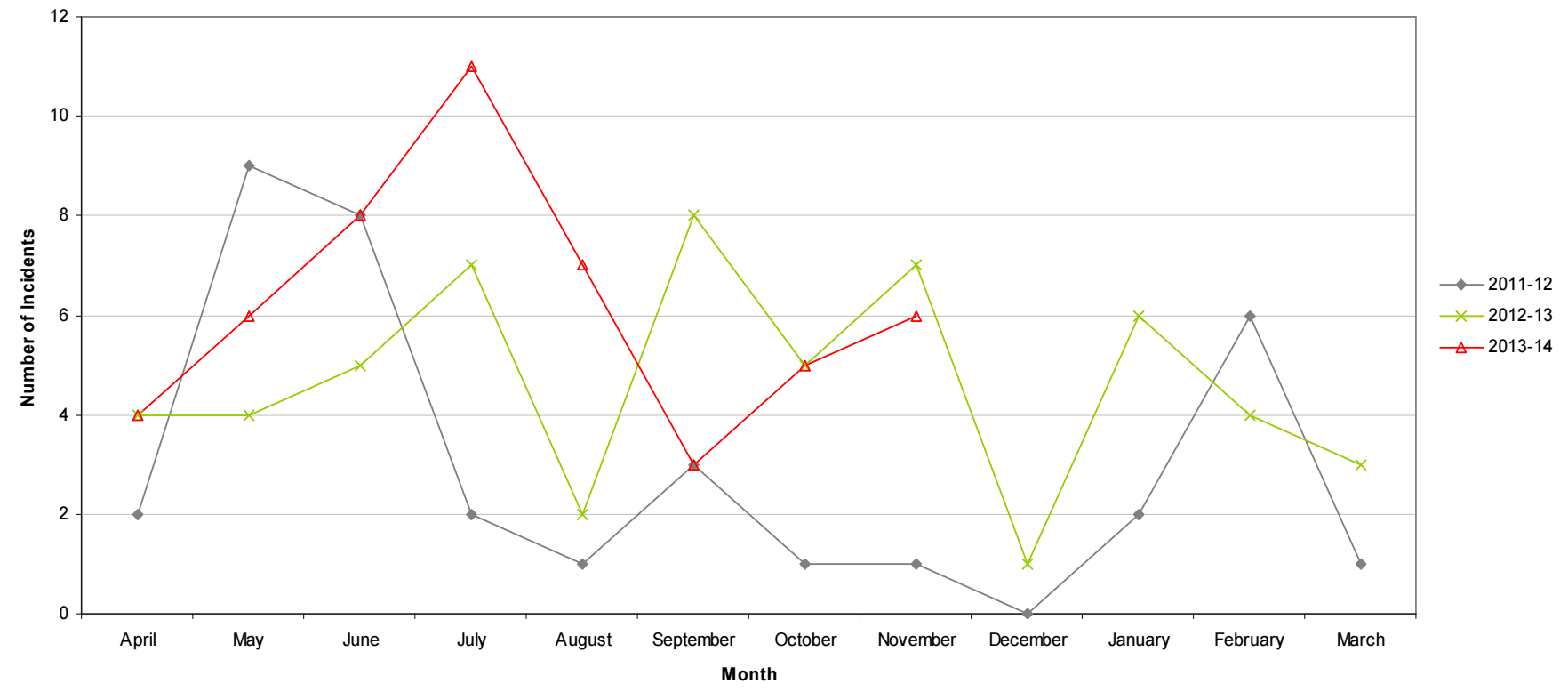


Fly Tipping

RED		
AMBER		
GREEN	6 incidents	Decrease of 1

- All data refers to a comparison with the previous year's month
- It is proposed that performance over time graphs be used for each indicator
- Historic data for comparison is not available for dog fouling

Incidents of Fly Tipping - Wollaton East & Lenton Abbey



Housing

Ward Report - Wollaton East & Lenton Abbey Ward

Generated on: 18 December 2013







Anti-social behaviour





Performance indicator and definition	Target	2013/14			2012/13	2011/12
		Value	Status	Long Trend	Value	Value
% of ASB cases resolved by first intervention – Central region <i>Note: This PI monitors how many ASB cases NCH resolved on the first intervention e.g. written warning. Data for this indicator is not available by ward and is reported by Housing Office.</i>	76%	84.55%			78.92%	
% of ASB cases resolved – Central region <i>Note: This PI measures the proportion of ASB cases NCH has successfully resolved. Data for this PI is not available by ward and is reported by Housing Office.</i>	97.8%	100%			100%	97.53%
Number of new ASB cases – Central region <i>Note: Data for this PI is only available by Housing Office.</i>		104			144	229
Tenant satisfaction with the ASB service - Central region <i>Note: Data for this PI is only available by Housing Office.</i>	8	7.48			6.95	6

Housing

Repairs







Performance indicator and definition	Target	2013/14			2012/13	2011/12
		Value	Status	Long Trend	Value	Value
% of repairs completed in target – Wollaton East & Lenton Abbey Ward <i>Note: This PI monitors the proportion of repairs being completed within agreed timescales.</i>	96%	96.75%			91.93%	94.58%
Tenant satisfaction with the repairs service <i>Note: Data for this PI is only available citywide</i>	8.8	8.69			8.64	8.65

Rent Collection



Performance indicator and definition	Target	2013/14			2012/13	2011/12
		Value	Status	Long Trend	Value	Value
% of rent collected – Central region <i>Note: This PI measures the amount of rent collected (including tenant arrears) as a percentage of rent due for the current year. Data for this indicator is not available by ward and is reported by Housing Office.</i> <i>Trend shows as improving if value is over 100% as arrears are decreasing.</i>	8.3%	99%			100.5%	100.6%
% of tenancies ending due to eviction <i>Note: This PI monitors the percentage of tenants being evicted due to rent arrears and is reported citywide.</i>	0.75%	0.69%			0.55%	0.61%

Housing

Empty properties







Performance indicator and definition	Target	2013/14			2012/13	2011/12
		Value	Status	Long Trend	Value	Value
Average void re-let time (calendar days) – Wollaton East & Lenton Abbey Ward <i>Note: This PI measures how long it takes NCH to re-let empty properties from the end of the old tenancy to the start of the new tenancy</i>	25	16.65			29.21	22.52
Number of empty properties awaiting decommission – Wollaton East & Lenton Abbey Ward <i>Note: This PI shows the number of empty properties which will not be re-let and includes those being decommissioned and / or demolished.</i>					2	1
Number of lettable voids – Wollaton East & Lenton Abbey Ward <i>Note: Lettable voids are empty properties available for re-letting. They will receive repair work and then be re-let to a new tenant.</i>		3			3	5

Tenancy sustainment

Performance indicator and definition	Target	2013/14			2012/13	2011/12
		Value	Status	Long Trend	Value	Value
Percentage of new tenancies sustained - Wollaton East & Lenton Abbey Ward <i>Note: This PI measures the number of new tenants who are still in their tenancy 12 months later.</i>	93.5%	96.88%			100%	

Housing

Key:

-  Performance on or exceeding target
-  Performance below target
-  Data only performance indicator
-  Performance has improved compared to two years ago
-  Performance has deteriorated compared to two years ago
-  Performance unchanged

Data prepared by Nottingham City Homes Performance Team

For more information please contact Jonathan Hurst, Performance Data Officer on 0115 9157368 or Marcus Parton, Performance Analyst on 0115 915715

Methodology

Data has not been audited or verified and therefore must only be used as a reflection of crime.

Crime data and ASB calls have been extracted from the Police systems and mapped to ascertain which Ward they occurred in.

Where a ward boundary overlaps with the City Centre, crime data and ASB calls relating to the City Centre have been removed.

Where possible the most recent data is used, although for some areas this may be a month further in arrears.

Discussions continue with other agencies regarding what further data can be included.